



Ultrasound Pregnancy Diagnosis  
Campbell /Hansmire Sheep CO



**WHY GET EXCITED ABOUT OPEN EWES?**

1lb corn = \$0.12

3 lb alfalfa = \$0.18

\$0.30 / day

Interest on holding the open ewe

\$120 @ 7% = \$0.02 / day

\$0.32 / day

For every day you keep that non-producing ewe; she **COSTS you \$0.32.**

60 DAYS = \$19.20    75 DAYS = \$24.00

**HOW MANY OPENS DO YOU HAVE?**



3226 Ledgestone Ct  
Fort Collins, CO 80528  
www.optimallivestock.com

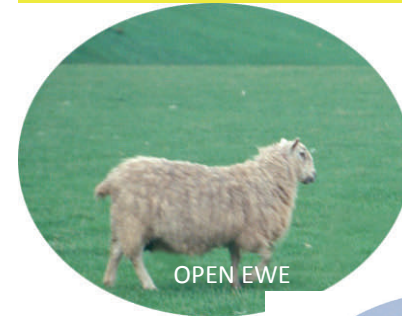
Geri Parsons, CVT  
geri.parsons@optimalag.com  
970-231-2477

Jay Parsons, Ag Economist  
jay.parsons@optimalag.com  
970-215-8043

Cleon Kimberling, DVM  
cleonvk@msn.com  
970-214-2142

Wayne Cunningham, DVM

**THE KEY TO PROFITABILITY!**



OPEN EWE



Single



Twins

**PUT YOUR RESOURCES**

**ON THE PREGNANT EWE**

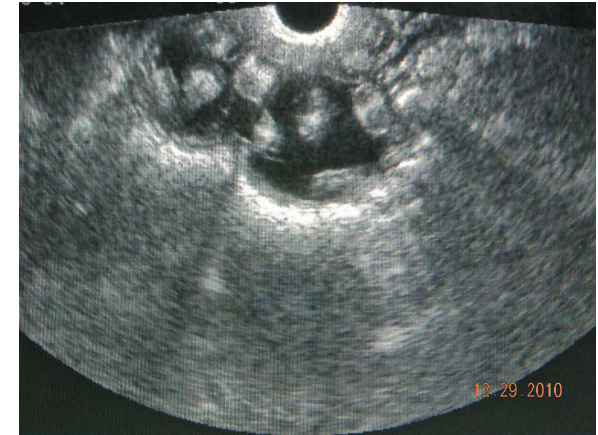
**(especially those with twins)**

**ELIMINATE THE CASH DRAIN**

**FROM OPEN EWES**



SPH Nutrition Chapter • 1997



### OPPORTUNITIES

TWINS 80# X2= 160# X \$1.70= \$272.00

SINGLE 100 # X \$ 1.60 = \$160.00

**\$112.00 is why you worry about twins**

DIRECT CASH OPERATING COSTS  
FOR A 1500 Hd RANGE EWE  
OPERATION.

\$108.00 PER HEAD.\*

### LOST OPPORTUNITIES

THE OPEN EWE is a LIABILITY. HER ONLY  
CONTRIBUTION IF SOLD IMMEDIATELY IS

160# @ \$75/CWT = \$120.00

USE THIS \$120.00 TO:

REDUCE YOUR DEBT INTEREST OR BUY FEED FOR  
YOUR PRODUCING EWES TO PROMOTE  
HEALTHY LAMBS.

THE OPEN EWE IS LIKE A HIDDEN BANK CHARGE  
DRAWING \$0.30 / DAY FROM YOUR ACCOUNT

STOP THE HEMORRHAGE NOW

\*CSU Extension Ag Economists data

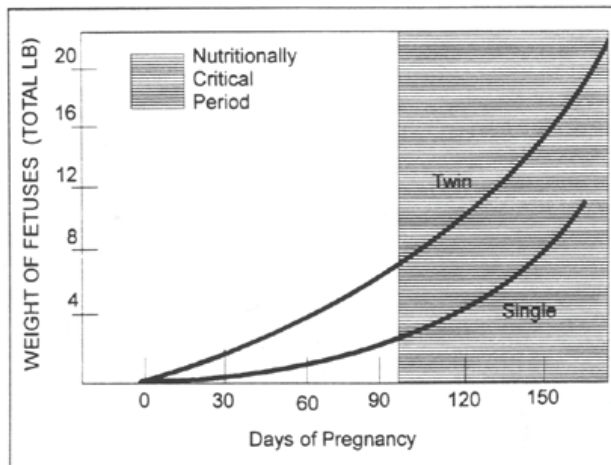


Figure 12. Lamb Fetal Growth.

Supplement according to the needs of the fetus. If you feed both ewes the same; the ewe with twins gets cheated and the ewe with a single gets too much. Both cases can be a disaster (difficult delivery, poor mothering, lack of colostrum and milk production and pregnancy toxemia).



**The non-productive ewe ELIMINATES  
the PROFIT from 5 producing ewes.**